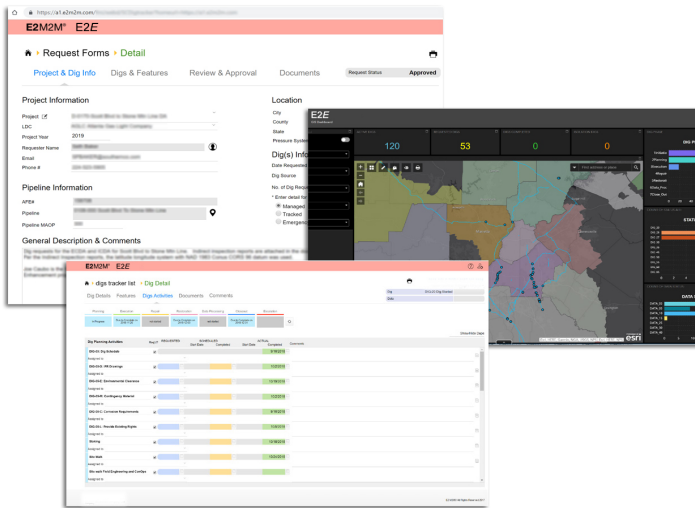


E2 M2M® - E2E PROGRAM MANAGEMENT

A Fully Customizable Application Facilitating Traceable, Verifiable and Complete Data Collection



The E2 M2M® E2E modules form a fully customizable web-based solution that are designed to capture the full process of project management and scheduling from inception to closeout. E2E replicates and automates new and existing program workflows while providing transparency and accurate information regarding project completion and performance. The E2 M2M® E2E modules are actively used by E2's clients to collect, initiate and track activity requests and eliminate the use of paper and ad-hoc spreadsheets for tracking the status of activities through the project life cycle.

In conjunction with E2's Bell Hole Inspection Module for collecting field inspection data electronically, this provides a comprehensive program management solution.



INITIATION

End-User submits a Request form in the E2 M2M® Application.



VALIDATION

System Validates all pre-existing data such as GIS, AFE Validations, Feature Level Data, etc.



APPROVAL

Project is routed to approvers, activities created, and all stakeholders are notified, leading into Execution Phase.



EXECUTION

Tasks are completed and dated. Automatic communication of project completeness alerts users of pending activities.



CLOSE-OUT

Application acts as a centralized document repository while tracking required steps to complete a thorough close-out.

PROJECT DASHBOARDS AND CUSTOM REPORTING THROUGHOUT PROJECT LIFE CYCLE

KEY BENEFITS

WEB-BASED APPLICATION

AUTOMATED WORKFLOWS

ROBUST SEARCH FEATURES

CENTRALIZED DOCUMENT REPOSITORY

TRACEABLE, VERIFIABLE & COMPLETE DATA COLLECTION

SCHEDULE & RESOURCE MANAGEMENT

REPORTING

REAL-TIME UPDATES

ONLINE MAP COMPONENT