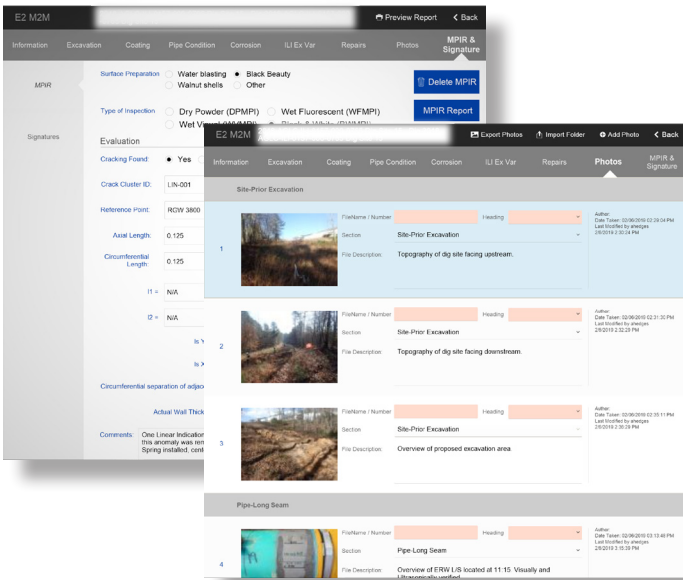


E2 M2M® - BELL HOLE INSPECTION MODULE

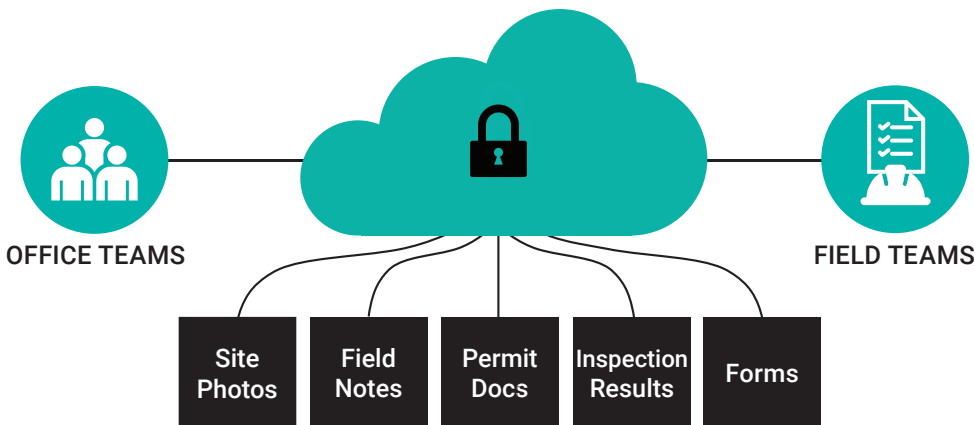
A Fully Customizable Application Facilitating Traceable, Verifiable and Complete Data Collection



The E2 M2M® Bell Hole Inspection Module is a web and cloud-based application that was designed and developed by E2 to streamline data collection for pipeline digs.

This Module is used by field inspectors to log coating, mechanical and corrosion defects, as well as post-ILI validations. A stand-alone form can be created for magnetic particle testing to provide supporting documentation. Along with field notes, site photos, and other pertinent documents, the module has chain-of-custody and reporting capabilities. Forms and reports go through an electronic routing and approval process.

Inspection forms and user-interface can be customized to operator-specific requirements. Information is made available in real-time to field and office teams, reducing the time spent in field documentation.



**E2 M2M®
BELL HOLE
INSPECTION
MODULE**

**E2 M2M®
DIGTRACKER
MODULE**

**A COMPREHENSIVE
DIG MANAGEMENT
SOLUTION**

KEY BENEFITS

CUSTOMIZABLE INSPECTION FORMS
ELECTRONICALLY LOG DEFECTS
AUTOMATED MATH COMPONENT
CHAIN-OF-CUSTODY
OFFLINE MODE

ELECTRONIC ROUTING & APPROVAL PROCESS
CENTRALIZED DOCUMENT REPOSITORY
REAL-TIME UPDATES AND AVAILABILITY
WEB & CLOUD-BASED APPLICATION
AUTOMATED WORKFLOWS